

8. Galáxias Espirais imagens



imagens:

Prestem atenção a:

- Bojo
- Disco
- Braços
- Floculentas ou grand design
- Barras, anéis
- Poeira
- Formação estelar
- Associação entre braços e formação estelar
- Companheiras/interações
- Detalhes...



M100



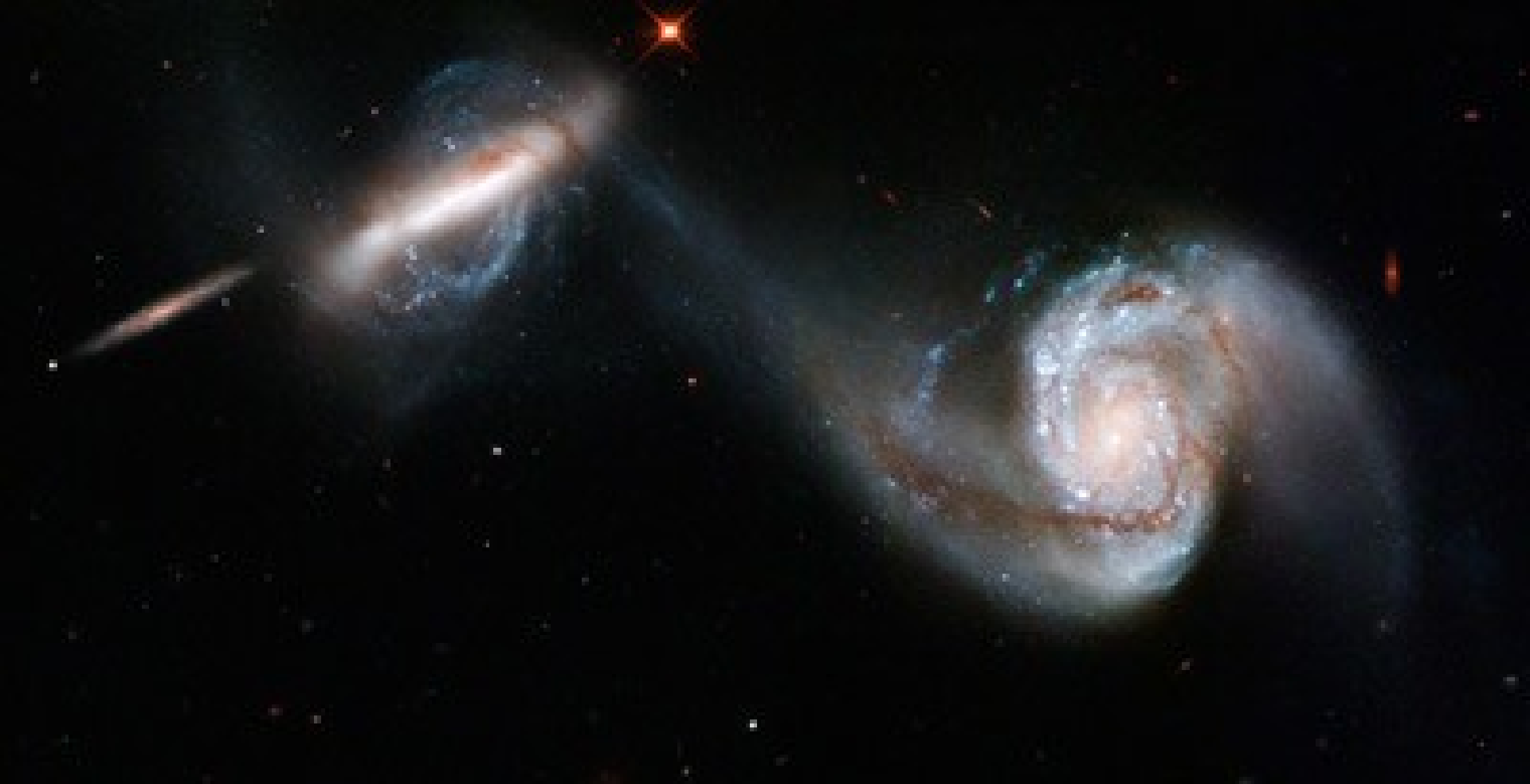
NGC4603



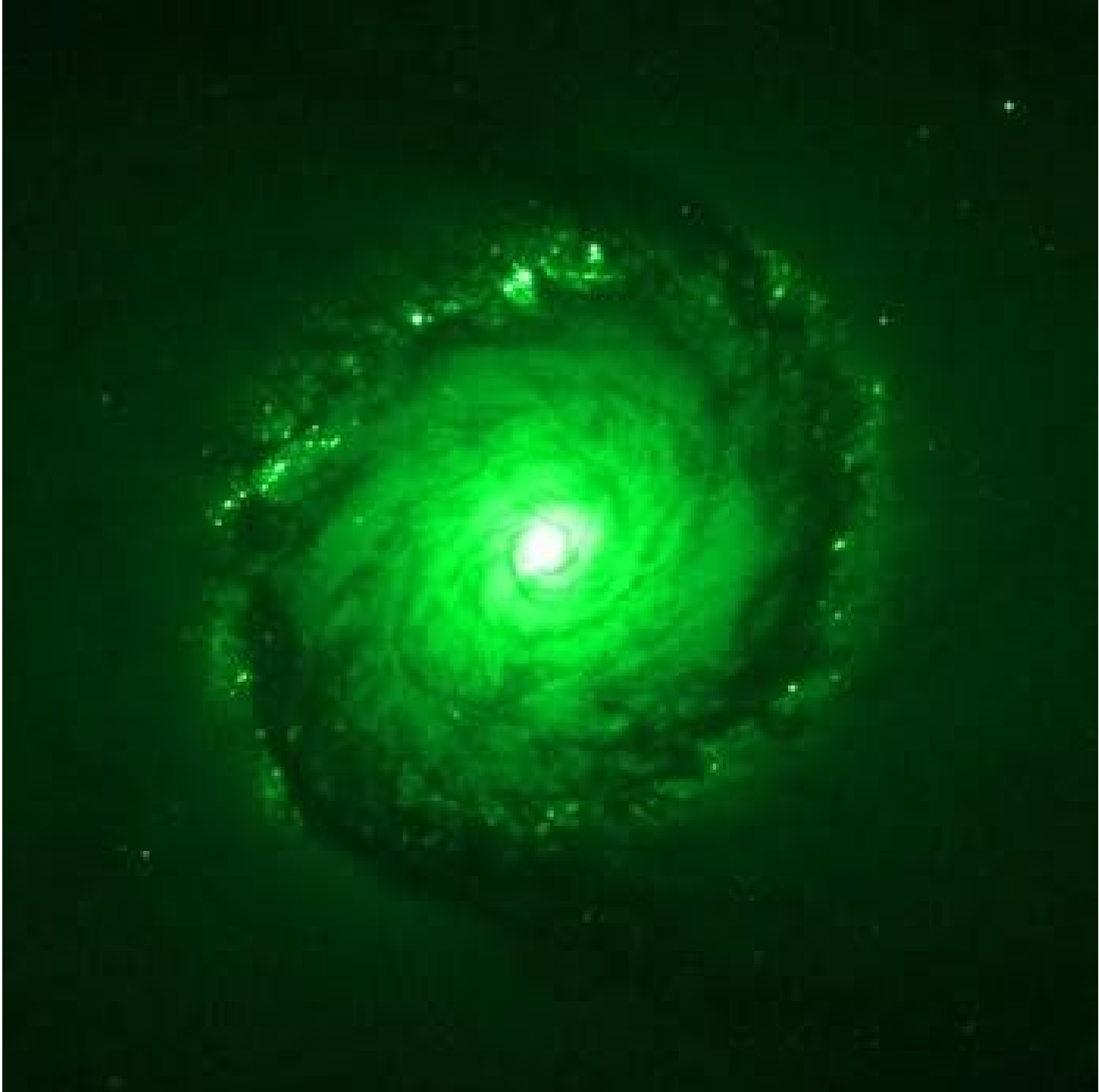
NGC7793



NGC6946



Par Arp 87



NGC1512



M104 no IV



M64



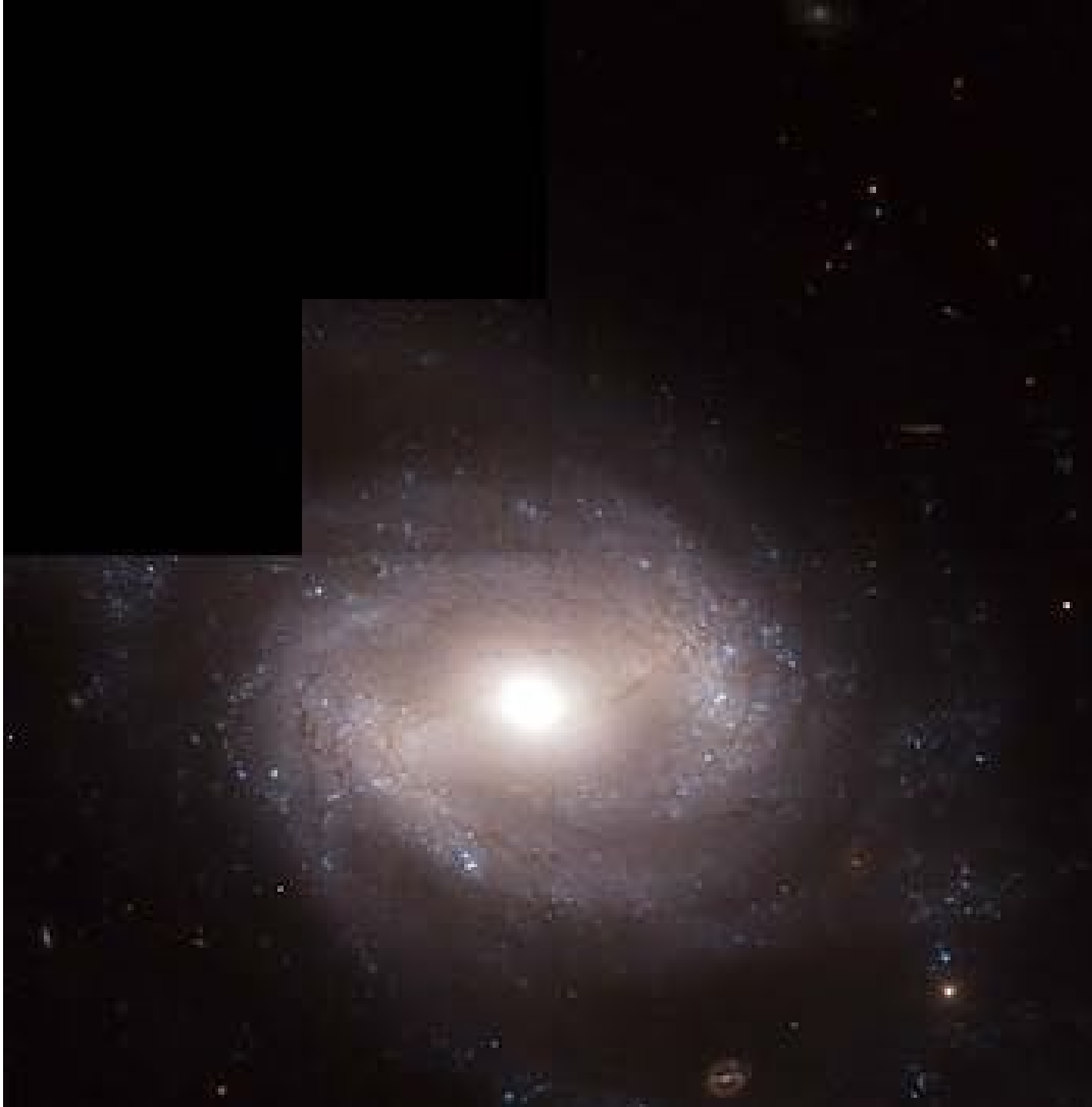
NGC4013



NGC1300



M74



NGC4639



NGC4603



Girino (tadpole)



Rodamoinho – M51

Detalhes de M51





NGC1672



NGC1512



M81



M81: HST+Galex+Spitzer



Circinus



NGC4414

M101





NGC4622



NGC1309



NGC7257



NGC6050



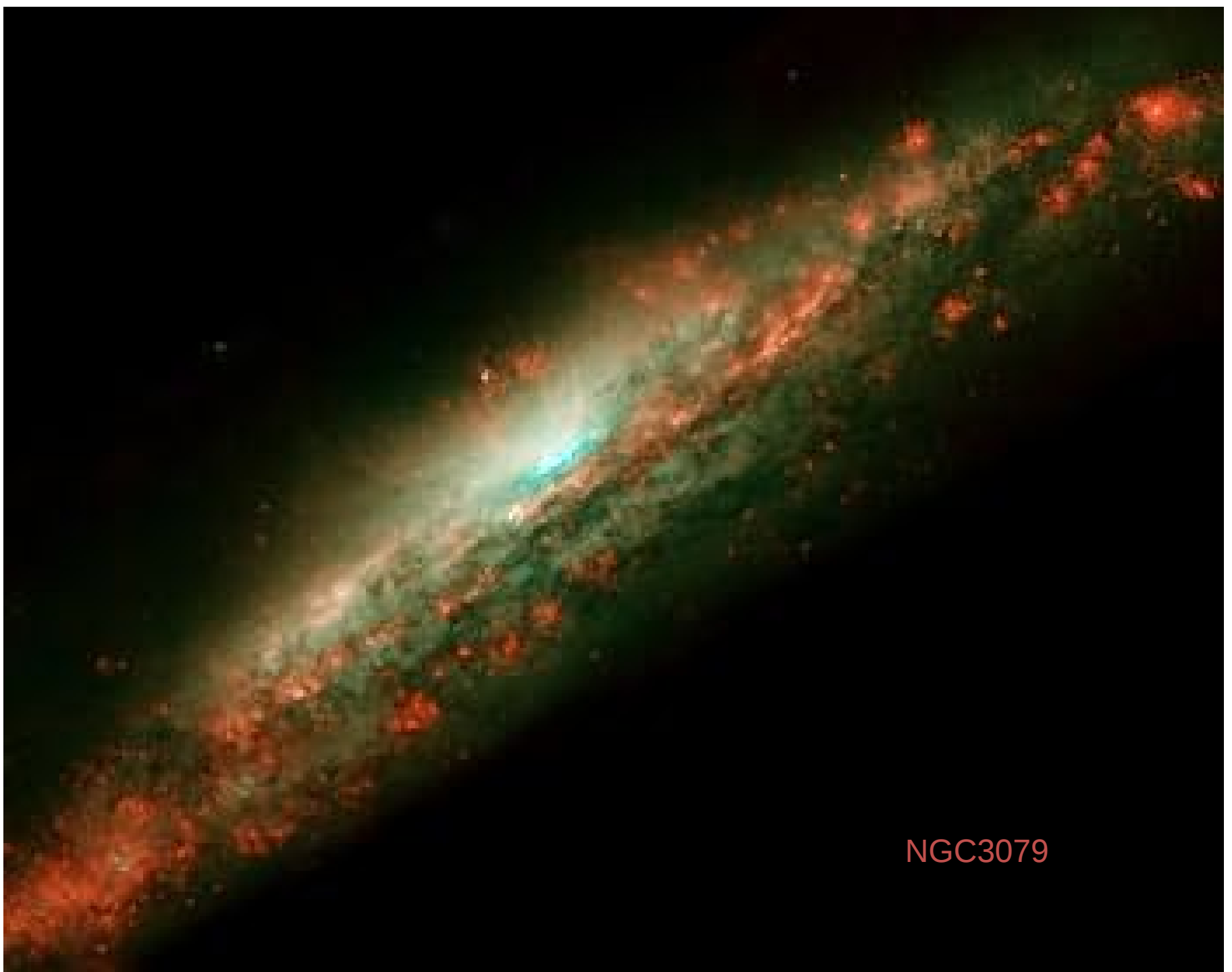
NGC3370



NGC3370



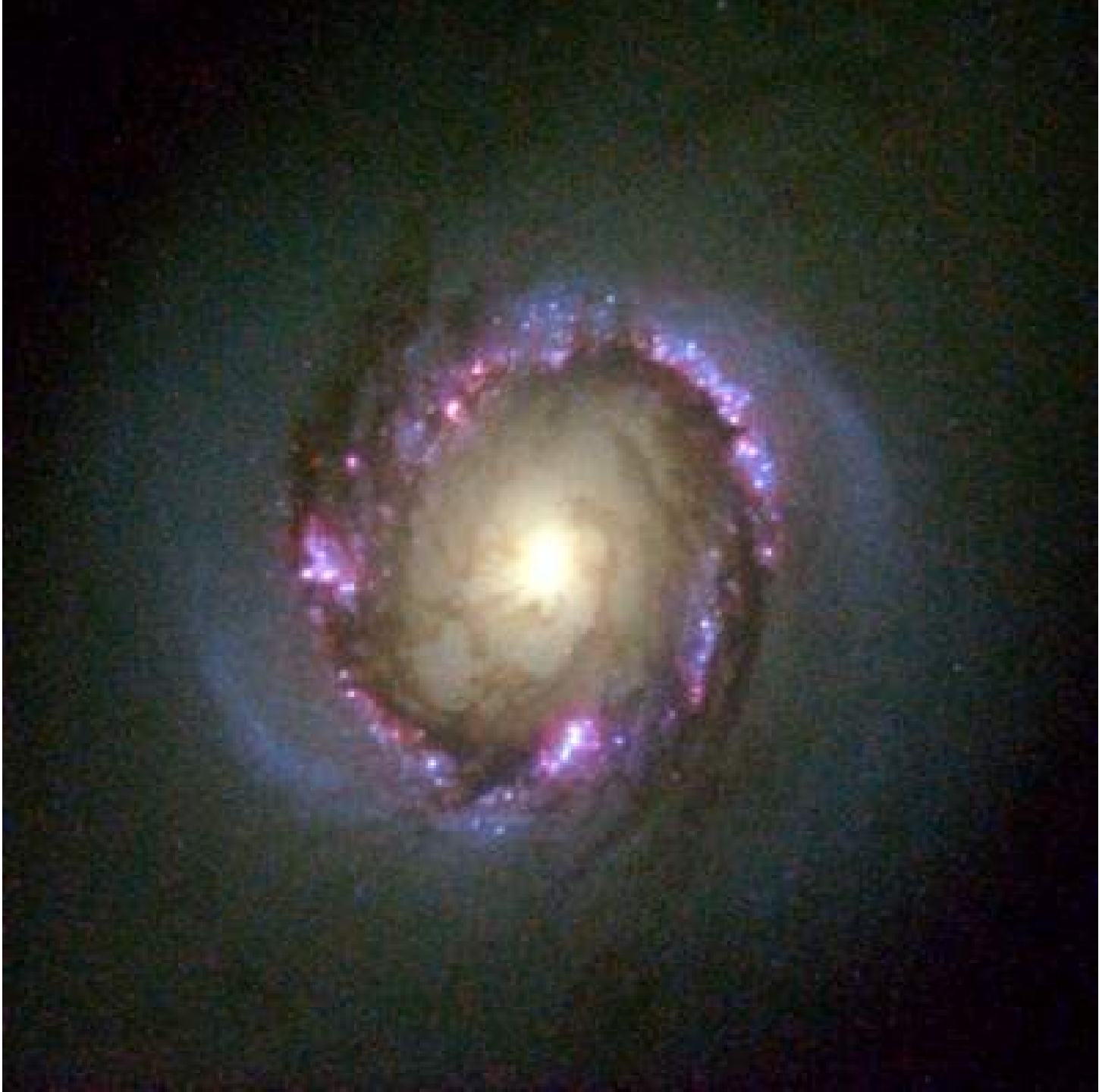
NGC3310



NGC3079



NGC5866



NGC4314



NGC3949



NGC7742



ESO 510-G13: o que produz o *warp*?



Disco com warp



Par AM 0500-620



Duas galáxias
alinhadas
NGC3314



COSMOS 3127341



NGC5754



NGC 1410 e NGC 1409



NGC6782



IRAS 18090



NGC1365



NGC 5331



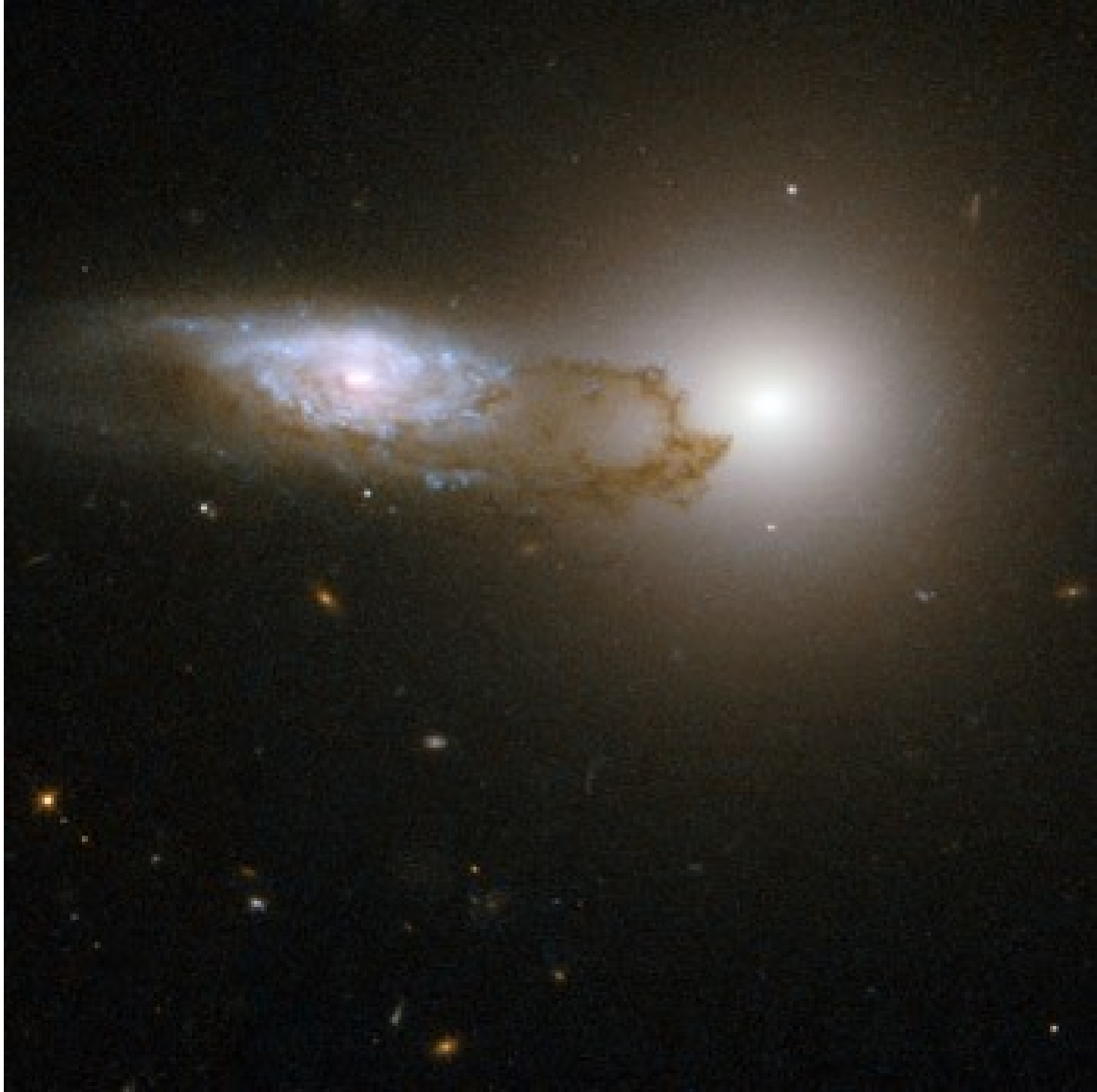
NGC7674



IRAS 20351



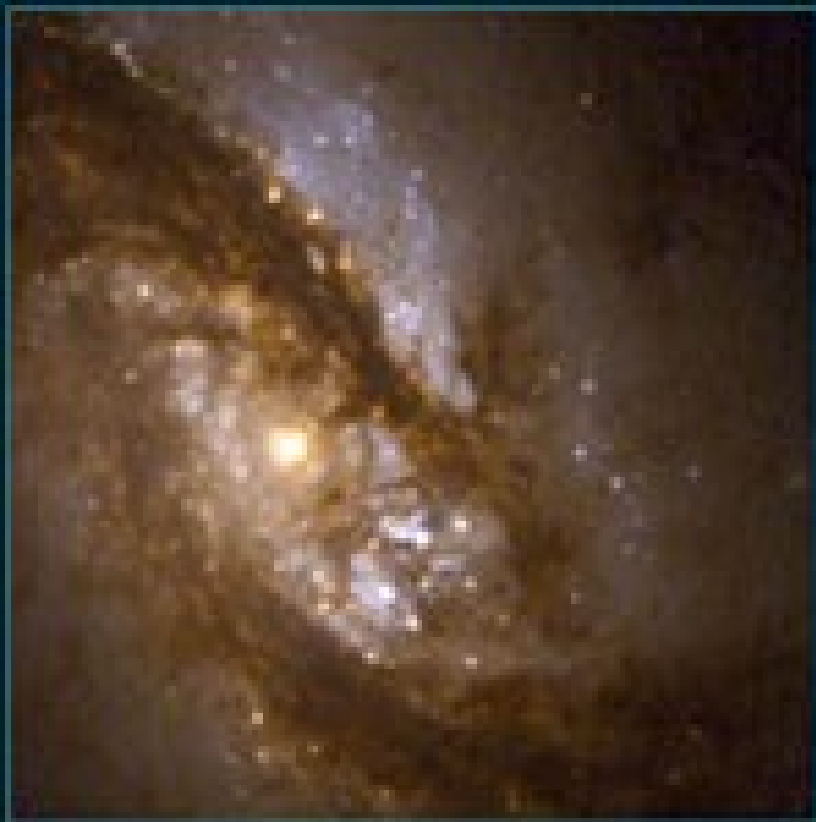
NGC6786



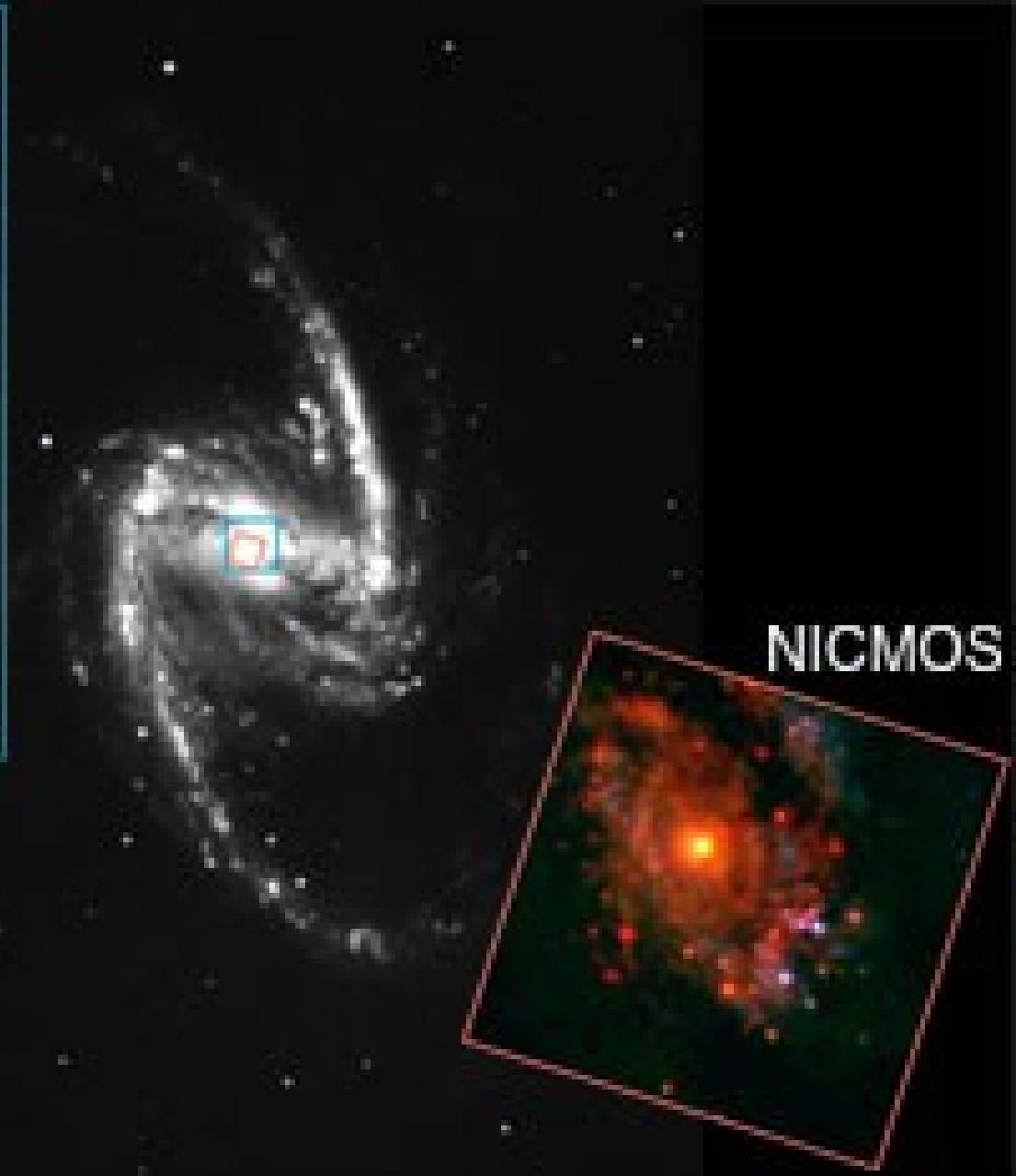
AM 1316-241



NGC 7469



WFPC2



NICMOS

NGC 1365



NGC 5907

ESO 510-G13: o que produz o *warp*?



Duas galáxias alinhadas
(NGC3314)- discuta a transparência
do disco da galáxia que está de frente



Especule sobre a formação
dessa galáxia poeirenta,
NGC1316

